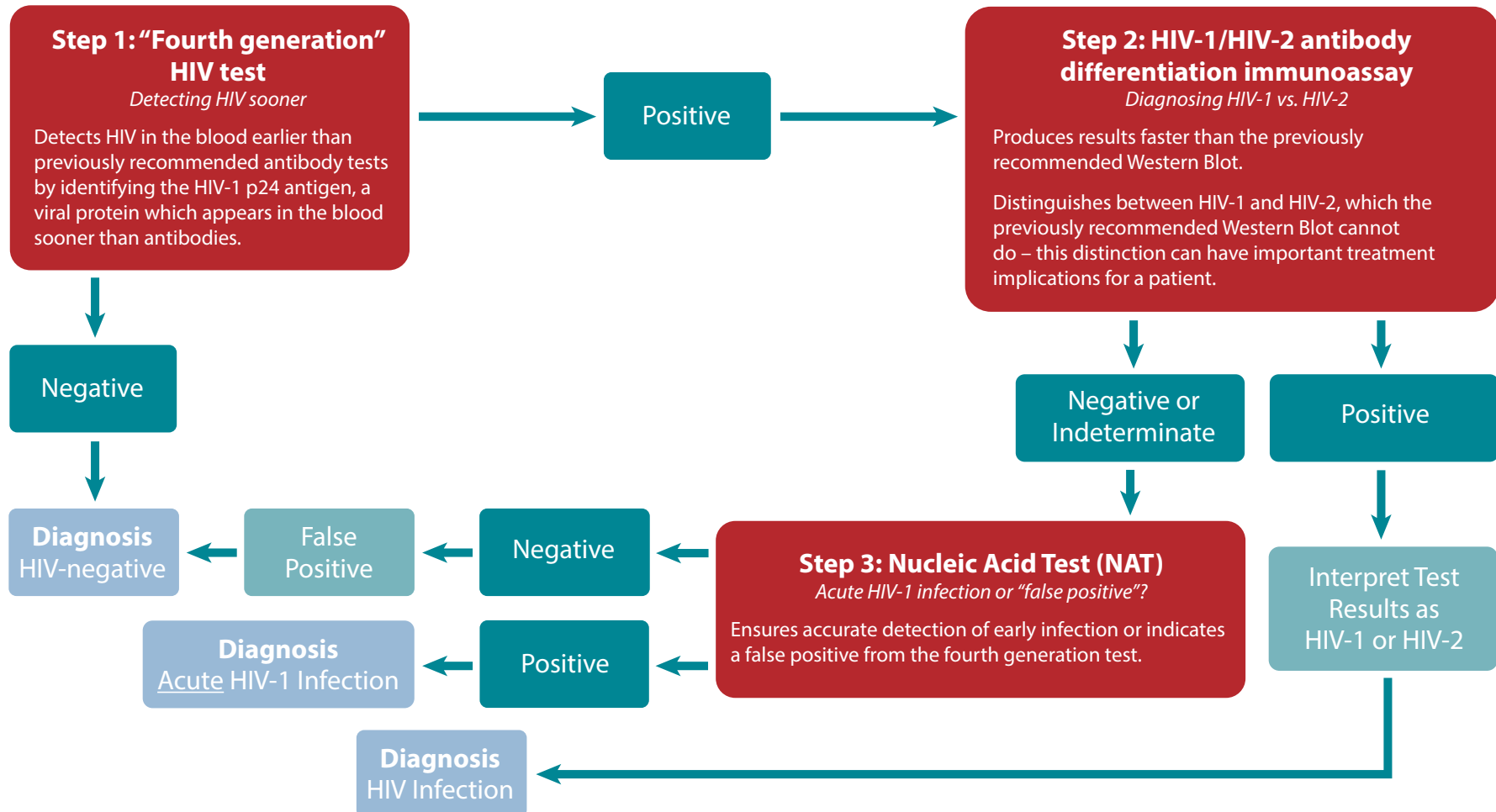


New CDC Recommendations for HIV Testing in Laboratories

A step-by-step account of the approach

CDC's new recommendations for HIV testing in laboratories capitalize on the latest available technologies to help diagnose HIV infections earlier – as much as 3-4 weeks sooner than the previous testing approach. Early diagnosis is critical since many new infections are transmitted by people in the earliest (“acute”) stage of infection.

By putting the latest testing technology to work in laboratories across the United States, we can help address a critical gap in the nation's HIV prevention efforts.



This graphic is designed to illustrate key concepts of the new testing approach in laboratories. For more detail, please see the full guidelines here: <http://www.cdc.gov/hiv/pdf/HIVtestingAlgorithmRecommendation-Final.pdf>.



U.S. Department of Health and Human Services
Centers for Disease Control and Prevention